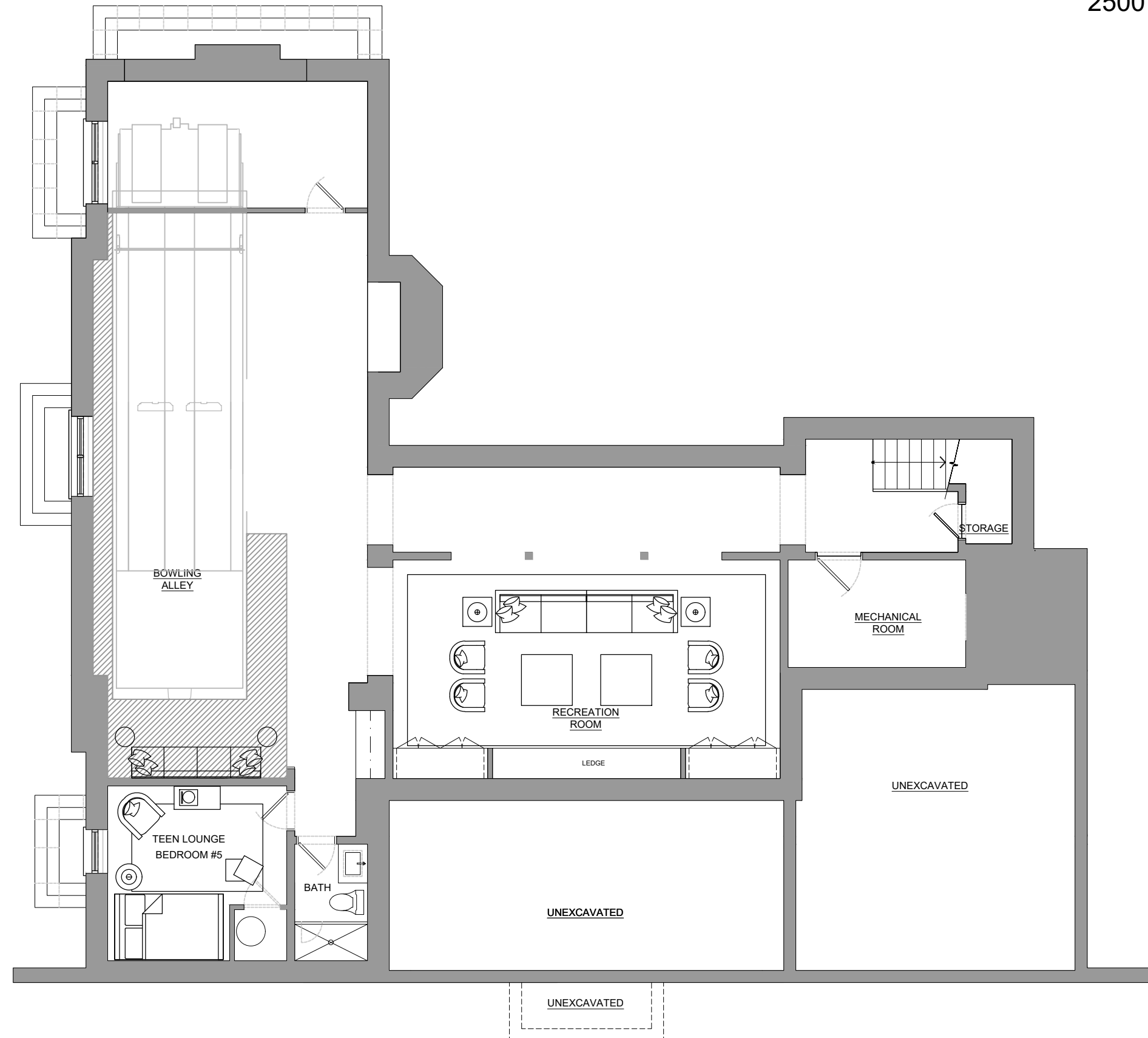
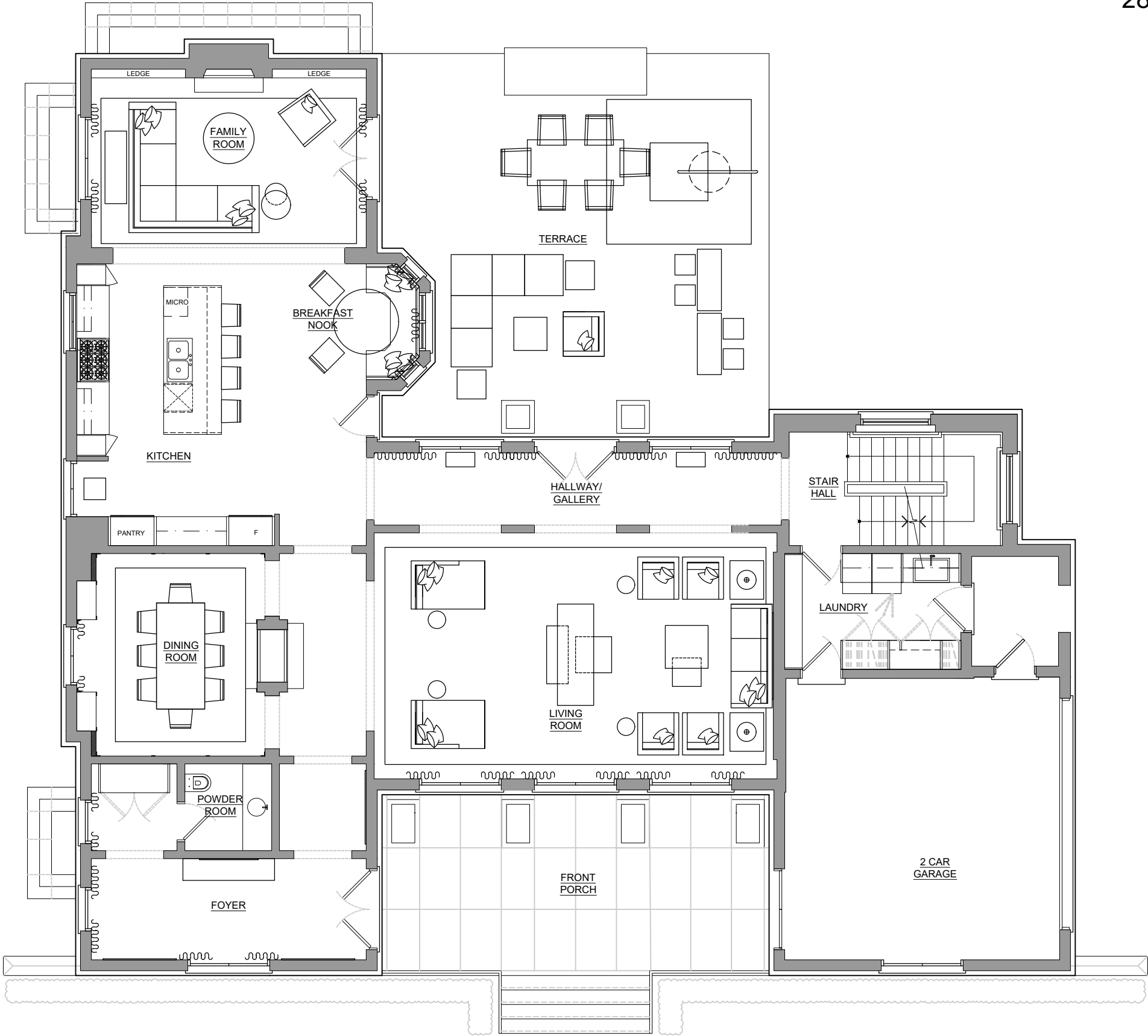


393 Maple Grove
Basement Floor Plan
2500 SQF of Living Space



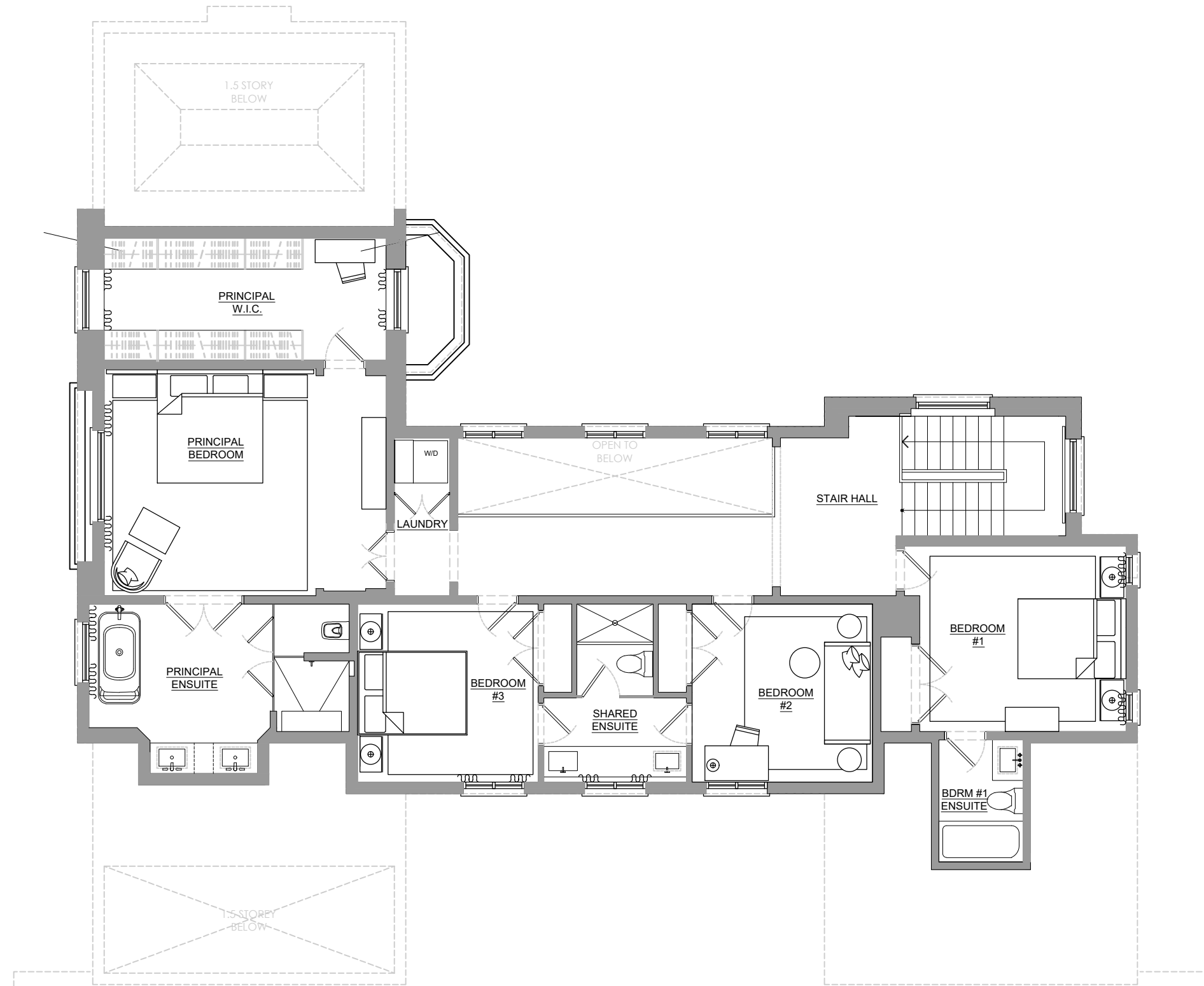
NOTE: Sizes are approximate and for illustration purpose only. As built may differ

393 Maple Grove
Main Floor Plan
2800 SQF of Living Space



NOTE: Sizes are approximate and for illustration purpose only. As built may differ

393 Maple Grove
Second Floor Plan
1750 SQF of Living Space



NOTE: Sizes are approximate and for illustration purpose only. As built may differ