

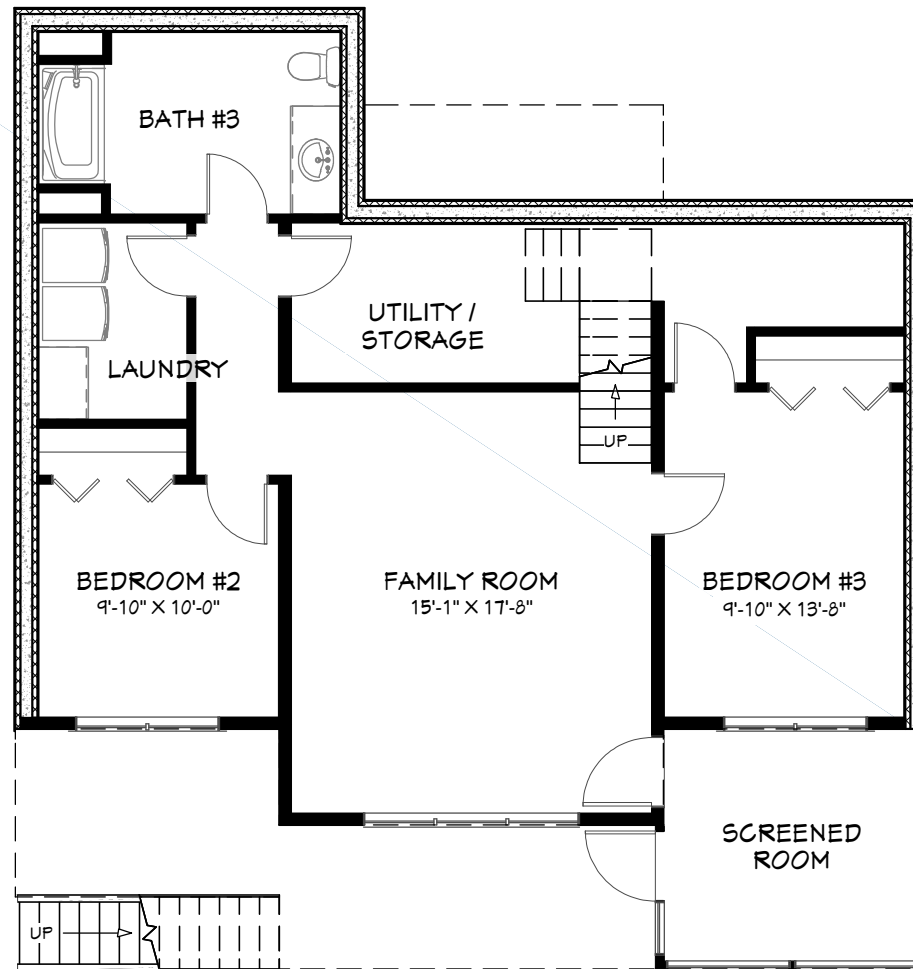
DIMENSIONS

Width: 38'
Depth: 40'

SUMMER 2023

SQUARE FOOTAGE

Walkout Lower-Level: 860 sq.ft.
Main Floor: 1,016 sq.ft.
Upper Floor: 192 sq.ft.
Total Living Area: **2,068 sq.ft.**



WALKOUT LOWER LEVEL

Visit our website for more information
www.linwoodhomes.com



Designs, Images & Plans © Linwood Homes Ltd.

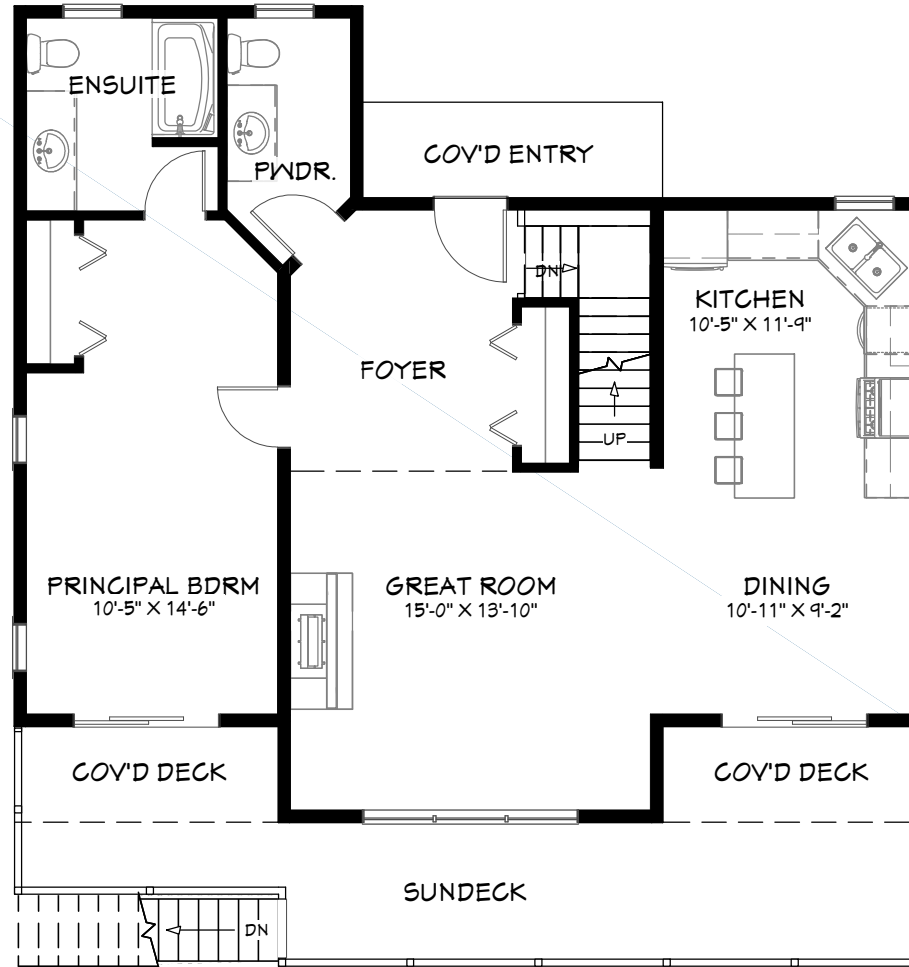
DIMENSIONS

Width: 38'
Depth: 40'

SUMMER 2023

SQUARE FOOTAGE

Walkout Lower-Level: 860 sq.ft.
Main Floor: 1,016 sq.ft.
Upper Floor: 192 sq.ft.
Total Living Area: **2,068 sq.ft.**



MAIN FLOOR

Visit our website for more information
www.linwoodhomes.com



Designs, Images & Plans © Linwood Homes Ltd.

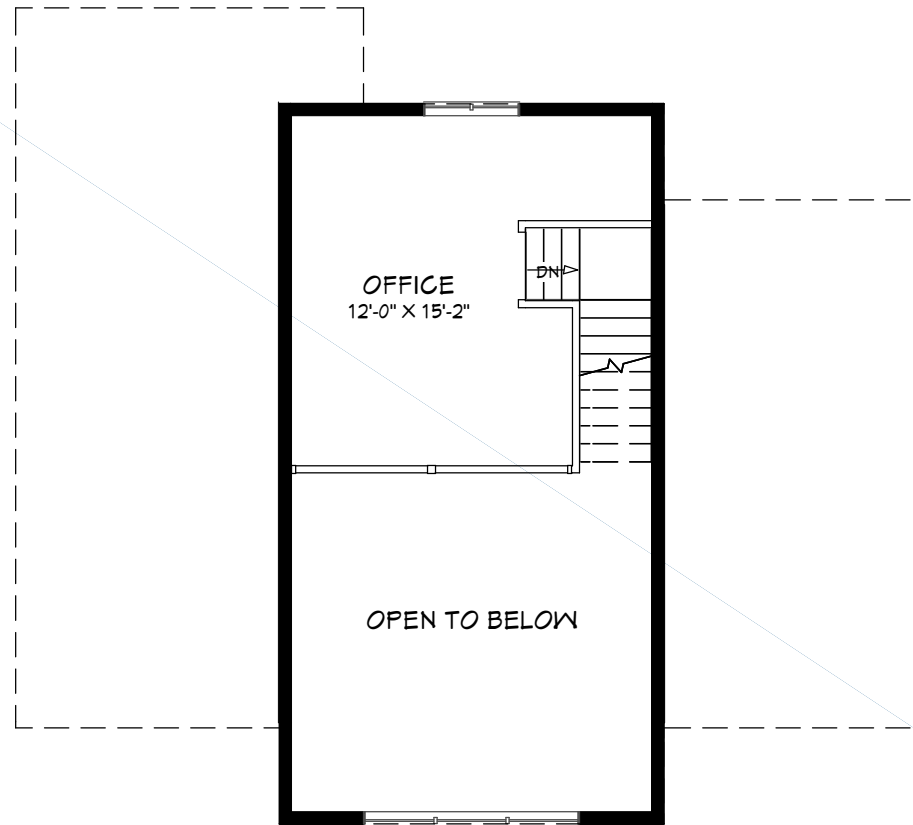
DIMENSIONS

Width: 38'
Depth: 40'

SUMMER 2023

SQUARE FOOTAGE

Walkout Basement: 860 sq.ft.
Main Floor: 1,016 sq.ft.
Upper Floor: 192 sq.ft.
Total Living Area: **2,068 sq.ft.**



UPPER FLOOR

Visit our website for more information
www.linwoodhomes.com



Designs, Images & Plans © Linwood Homes Ltd.