

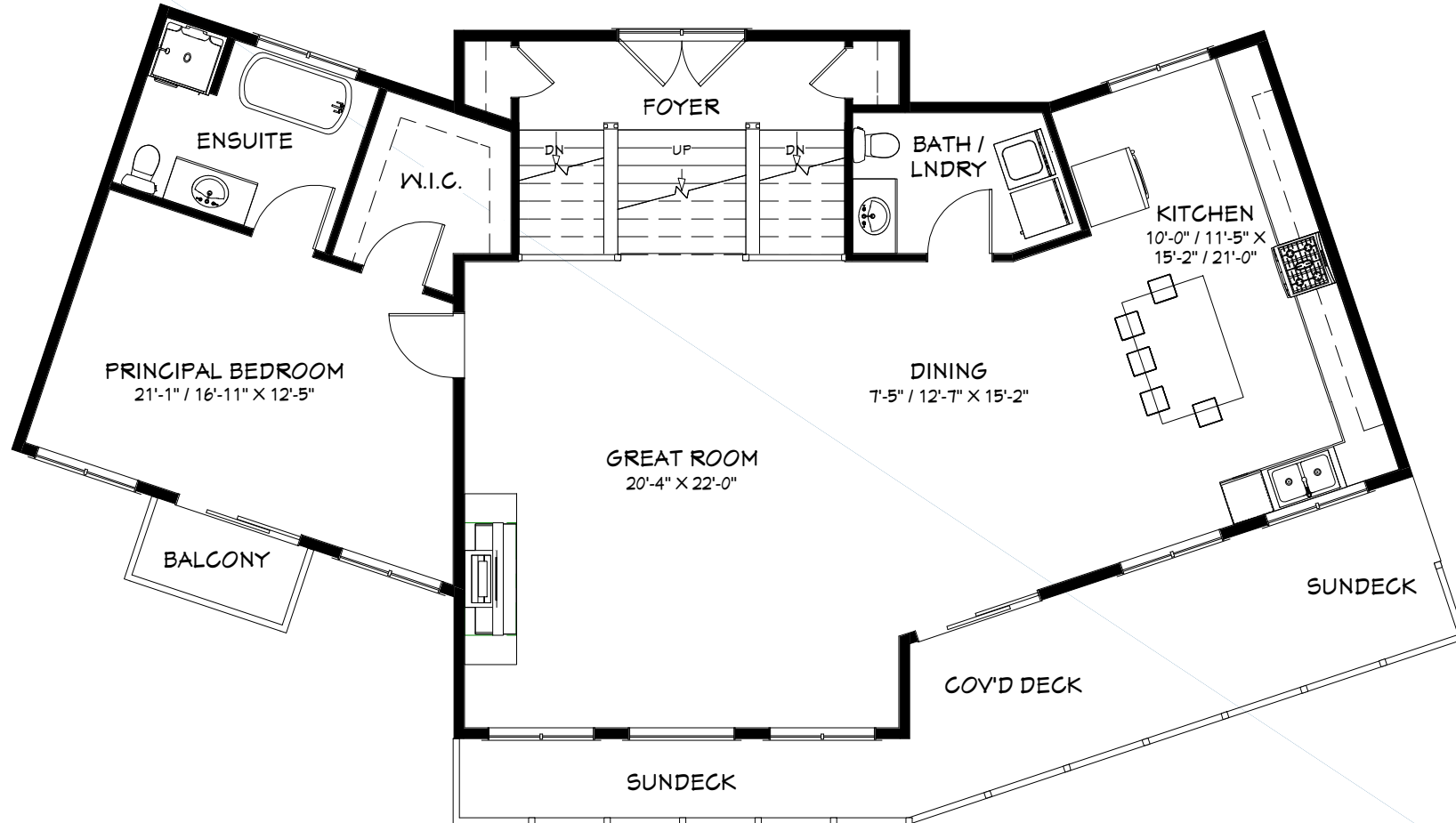
DIMENSIONS

Width: 66'
Depth: 43'

FALL 2022 PRINCE EDWARD COUNTY

SQUARE FOOTAGE

Basement: 1,338 sq.ft.
Main Floor: 1,580 sq.ft.
Total Living Area: 2,918 sq.ft.



MAIN FLOOR

Visit our website for more information
www.linwoodhomes.com



Designs, Images & Plans © Linwood Homes Ltd.

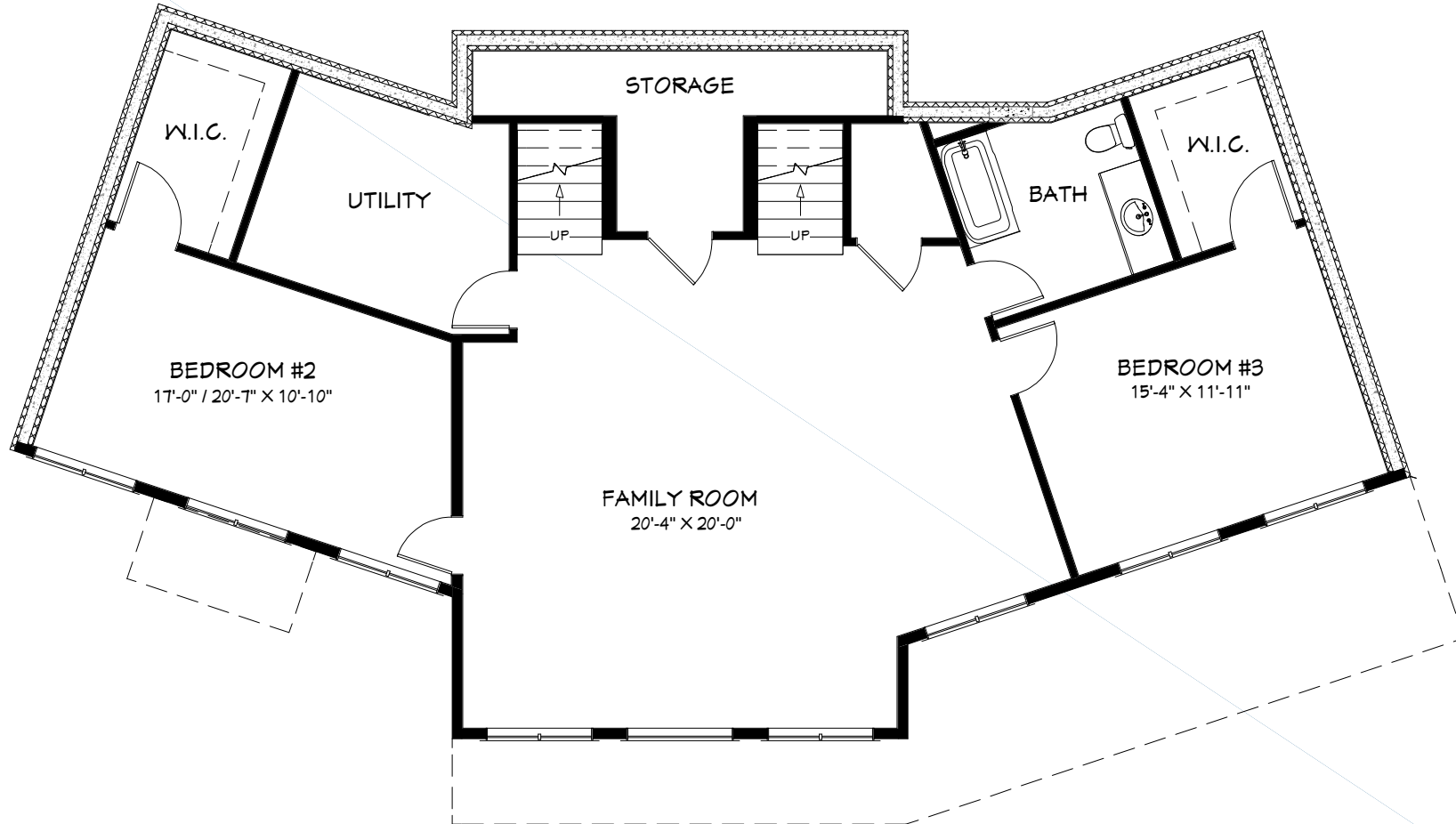
DIMENSIONS

Width: 66'
Depth: 43'

FALL 2022 PRINCE EDWARD COUNTY

SQUARE FOOTAGE

Basement: 1,338 sq.ft.
Main Floor: 1,580 sq.ft.
Total Living Area: **2,918 sq.ft.**



BASEMENT

Visit our website for more information
www.linwoodhomes.com



Designs, Images & Plans © Linwood Homes Ltd.