

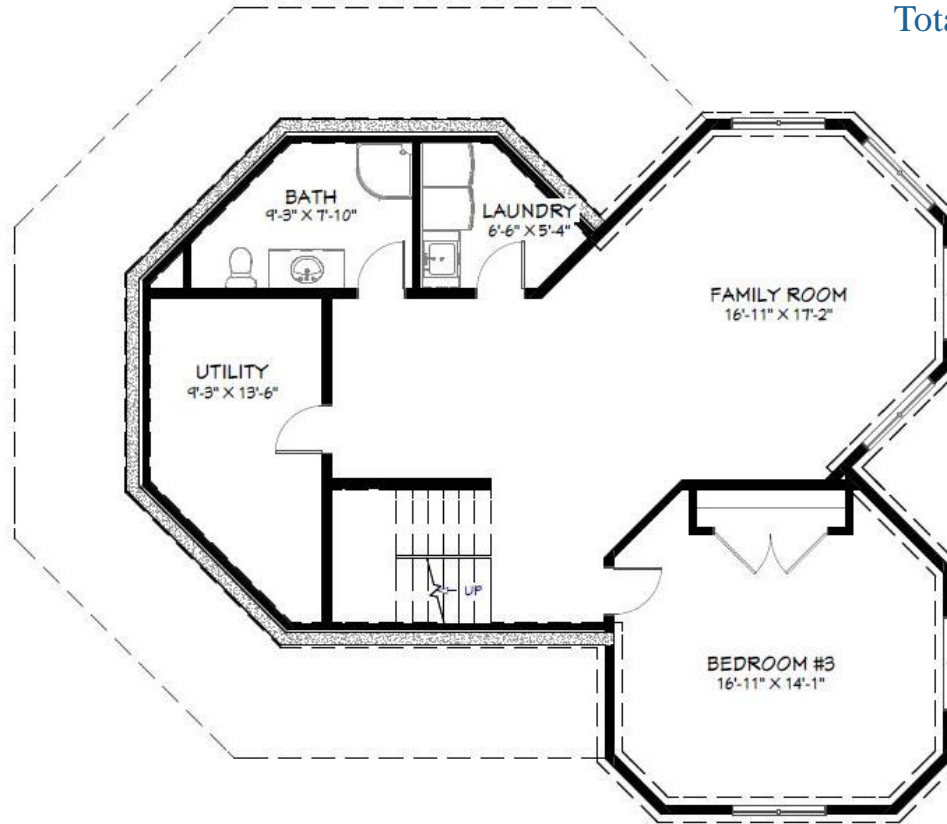
## DIMENSIONS

Width: 50 feet  
Depth: 43 feet

# SPRING 2021 PRINCE EDWARD COUNTY COUNTRY HOME

## SQUARE FOOTAGE

Basement: 1,081 SF  
Main Floor: 1,249 SF  
Upper Floor: 643 SF  
Total Living Area: **2,973 SF**



BASEMENT

Visit our website for more information  
[www.linwoodhomes.com](http://www.linwoodhomes.com)



Designs, Images & Plans © Linwood Homes Ltd.

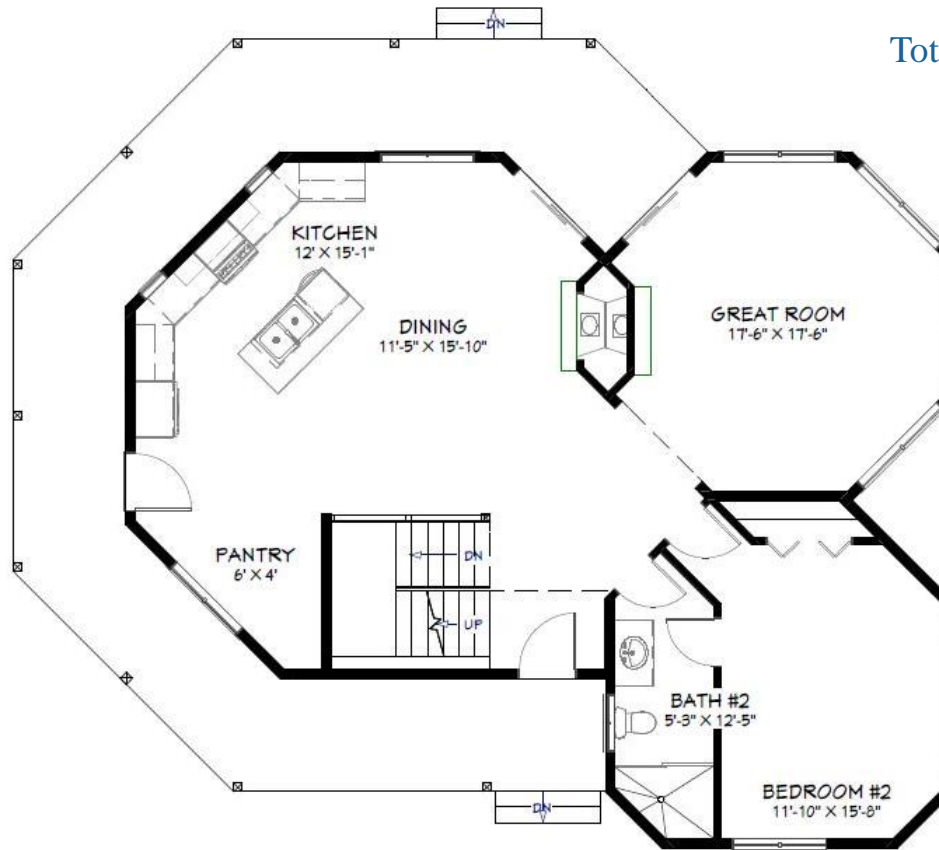
## DIMENSIONS

Width: 50 feet  
Depth: 43 feet

# SPRING 2021 PRINCE EDWARD COUNTY COUNTRY HOME

## SQUARE FOOTAGE

Basement: 1,081 SF  
Main Floor: 1,249 SF  
Upper Floor: 643 SF  
Total Living Area: **2,973 SF**



MAIN FLOOR

Visit our website for more information  
[www.linwoodhomes.com](http://www.linwoodhomes.com)



Designs, Images & Plans © Linwood Homes Ltd.

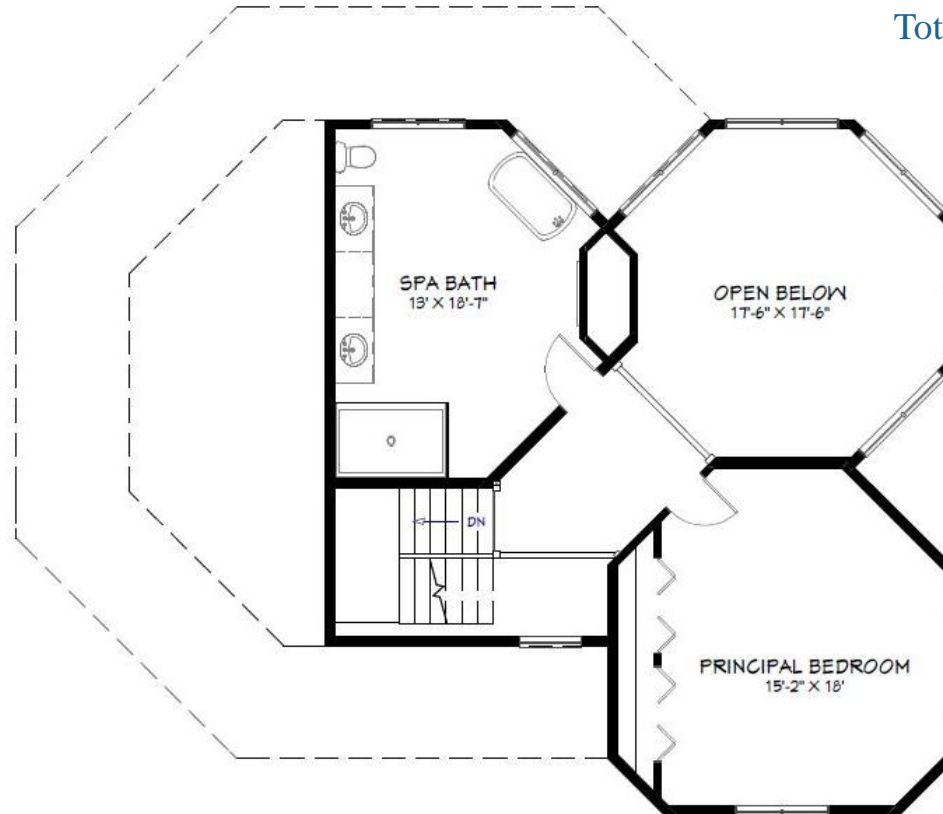
## DIMENSIONS

Width: 50 feet  
Depth: 43 feet

## SPRING 2021 PRINCE EDWARD COUNTY COUNTRY HOME

## SQUARE FOOTAGE

Basement: 1,081 SF  
Main Floor: 1,249 SF  
Upper Floor: 643 SF  
Total Living Area: **2,973 SF**



UPPER FLOOR

Visit our website for more information  
[www.linwoodhomes.com](http://www.linwoodhomes.com)



Designs, Images & Plans © Linwood Homes Ltd.